



PROCESS SENSORS
MCT460-WP^{WOOD}

NOVA SERIES

MCT460-WP

Wood Products Moisture Transmitter

The First Choice for Near Infrared (NIR) Moisture Measurement
in the Wood Products Industry

PROCESS SENSORS
CORPORATION 

DASTEC S.R.L.

Representantes / Distribuidores Exclusivos

Buenos Aires, Argentina

Tel.: (54 - 11) 5352-2500

Email: info@dastecsrl.com.ar

Web: www.dastecsrl.com.ar



NOVA SERIES MCT460-WP

Near Infrared (NIR) Moisture Transmitter
for the Wood Products Industry

MCT460-WP Stand Alone Configuration

- Connects directly to PLC
- No Operator Interface required
- Powered at the MCT460-WP Transmitter
- All Analog Outputs, Digital and Bus interfaces directly from the Transmitter
- 5.7" Operator Interface/Display (optional)

Operator Interface
Color Touch Screen
(Optional)



Incoming Power
Bus Interface
0-10V/4-20mA
RS232/485

Stand Alone Transmitter

PLC
PC
Process Controller
DAS



MCT460-WP System Configuration

- Transmitter connects to Operator Interface
- Transmitter powered from Operator Interface
- All Analog Outputs, Digital and Bus interfaces from Operator Interface
- Large 5.7" high resolution Touchscreen

Operator Interface
Color Touch Screen

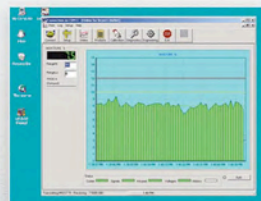


System Transmitter

Digital & BUS Interface
Analog Outputs
Incoming Power
Power & Communication

PLC
PC
Process Controller
DAS

Computer Software



Process Sensors Corporation (PSC) Viewer Software is a proprietary Windows-based package. It monitors all MCT460-WP functions and allows an operator to insert set-up parameters, perform or adjust calibrations, select product codes, examine internal diagnostic values and view trends of moisture and temperature.

Nova Series

A Robust, Flexible & Accurate Transmitter

How does the MCT460-WP Measure Moisture?

Water molecules contain O-H bonds which absorb light energy in a specific region of the NIR spectrum. The more water that is present, the greater the energy that is absorbed.

The MCT460-WP houses a quartz halogen lamp which channels energy through a rotating wheel containing NIR filters, one positioned at a wavelength where water absorbs and others positioned at reference wavelengths where there's no absorption by water.

Pulses of light illuminate the product and the diffused reflected light is collected by a concave mirror and focused onto a single temperature controlled detector. Detector signals are processed to give a read-out proportional to the concentration of water. Resin measurements are based upon the O-H and C-H bonds.

Simple & Reliable

The MCT460-WP remains a total hands-off gauge. Upon installation, simply adjust the zero and put the gauge to work! There is no routine maintenance or re-calibration. Calibration check standards are available for confirmation of long term gauge stability.

MCT460-WP Features

- New micro controller, high performance, dual core architecture. One core dedicated to NIR signal acquisition, the other programmed to manage computations and communications options
- Samples entire NIR signal train for increased measurement accuracy
- Proprietary Filter combination and algorithm for wood products
- Embedded bootloader allows sensor firmware to be upgraded through USB or serial interface
- Ergonomically sound IP67 cast aluminum enclosure
- Temperature controlled PbS detector for enhanced stability
- Built in cooling panel and Air Purge Assembly

Stable & Accurate

Designed and configured specifically for the wood products industry, the **MCT460-WP** is easy to install, and may be used at any stage of processing with all types of wood products applications.

Typical applications include:

- Oriented Strand Board
- Particle Board
- Fiberboard
- Wood Based Panelboard
- Sawdust
- Wood Pellets
- Hog Fuels

Moisture Measurements

Product	Range	Accuracy
Particle Board:		
Dryer Input	40-60%	0.3%
Dryer Output	0-10%	0.1%
Blender Input	5-15%	0.2%
Blender Output	1-10%	0.2-0.4%
OSB	0-5%	0.3%
MDF:		
Dryer Input	25-35%	0.5%
Dryer Output	0-5%	0.1%
Douglas Fir	0-70%	0.5-2%
Various Wood Chips	30-60%	0.5-1.5%
Cedar Sawdust	15-70%	0.3-1.0%
Sawdust	0-40%	0.3%
Hog Fuel	20-60%	0.5-0.7%

Ranges are quoted on a wet weight basis.

NOVA SERIES

MCT460-WP

Wood Products Moisture Transmitter

The Innovative New NOVA Series

The **MCT 460-WP** provides accurate, reliable and stable outputs for measurement and control. It can also be configured to continuously monitor wood products temperature. Delivered pre-calibrated and with a comprehensive 2-year warranty, the MCT460-WP is simple to install and may be used at any stage of wood products processing.

Specifications: MCT460-WP NIR Transmitter

Measured NIR Constituents: _____ 1, 2 or 3 simultaneously
Accuracy: (subject to application)
Moisture: _____ +/- 0.1%
Resins: _____ +/- 0.2%
Moisture Range:
Wet Basis: _____ Min. 0.1% Max. 60%
Dry Basis: _____ Min. 0.1% Max. 400%
Transmitter/Product Distance: _____ 8-18 inches (200-450mm)
Calibration Codes: _____ 100
Response Time: _____ 1-999 seconds. Three modes available:
Damping, Integration and Gated.
Power: _____ 90-260VAC, 50/60 Hz, 40 watts
Outputs: _____ 4-20mA, 0-10V (isolated), RS-232 & RS485
Weight: _____ 19 lbs. (8.6kg)
Construction: _____ Cast Aluminum, IP67
Window Purge: _____ Airpurge Diffuser, requires 5 psi

Specifications: Operator Interface

Display: _____ 5.7 inch Color Touchscreen LCD
Languages: _____ User Selectable
Power: _____ From MCT460 Sensor or Local
Cable: _____ 10 ft (3 meters) standard
Enclosure: _____ Cast Aluminum

Maintenance:

Warranty: _____ 24 months Parts/Labor
Routine Cleaning: _____ None Required
Calibration Verification: _____ Calibration Check Standard
Cooling: _____ Vortex Air Cooler (optional)

CE Compliance:

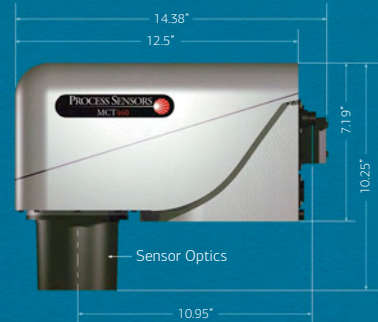
EMC Directives EN50081-1 & EN50082-2, EN61010-1
Low Voltage Directive

Databus & Software Interfaces:

Optional Bus Interfaces: _____ ProfiNet, ProfiBus, Ethernet IP
Modbus TCP, DeviceNet
Software: _____ Window-based Stand-alone Program
or OPC-DDE Server

Dimensions: MCT460

Front View

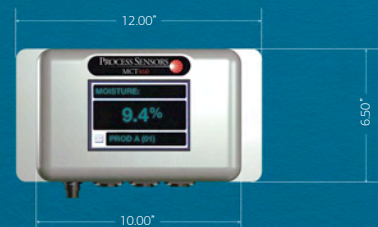


Bottom View



Operator Interface

Front View



Bottom View



DASTEC S.R.L.

Representantes / Distribuidores Exclusivos

Buenos Aires, Argentina

Tel.: (54 - 11) 5352-2500

Email: info@dastecsrl.com.ar

Web: www.dastecsrl.com.ar

HEADQUARTERS

United States

Process Sensors Corporation
113 Cedar St.
Milford, MA 01757 USA
Tel: (508) 473-9901
Fax: (508) 473-0715
info@processsensors.com

Europe

Process Sensors Europe
Unit 4, Adelaide House
Corbygate Business Park
Corby, Northants NN17 5JG UK
Tel: 01536 408066
Fax: 01536 407813
infouk@processsensors.com

Eastern Europe

Process Sensors Polska
ul. Erasmia z Zakroczyimia 12 lokal 2
03-185 Warszawa
Tel: (48) 22 6739526
Fax: (48) 22 6739527
Gsm: (48) 509 202759
tomasz@processsensors.com

ASIA - Process Sensors Asia

PT 2328 Pinggiran Golf
Kemumin, Pengkalan Chepa
Kota Bharu, Kelantan 16100
Malaysia
T: 011 60 17620-2806
Fx: 011 60 6601 4588
hussin@processsensors.com

For more information on Process Sensors products,
visit our website at:

www.processsensors.com

PROCESS SENSORS
CORPORATION

